



BINA PLASTIC

INDUSTRIES SDN BHD

(Co.No. 54840-T)



BBB™ HIGH DENSITY POLYETHYLENE (HDPE) PIPES

BBB™ HIGH DENSITY POLYETHYLENE (HDPE) PIPES

BBB™ HIGH DENSITY POLYETHYLENE (HDPE) PIPES

HDPE PIPES CATALOGUE

Specification of HIGH DENSITY POLYETHYLENE (HDPE) PIPE PE 80

Standard : MS 1058 equivalent to ISO 4427

Color : Black with 4 blue stripes

PIPE OD mm	PN 10			PN 12.5			PN16		
	e min mm	e max mm	Wt kg/m	e min mm	e max mm	Wt kg/m	e min mm	e max mm	Wt kg/m
20				2.0	2.3	0.117	2.3	2.7	0.131
25	2.0	2.3	0.169	2.3	2.7	0.169	3.0	3.4	0.198
32	2.4	2.8	0.229	3.0	3.4	0.280	3.6	4.1	0.325
40	3.0	3.5	0.358	3.7	4.2	0.427	4.5	5.1	0.507
50	3.7	4.2	0.546	4.6	5.2	0.663	5.6	6.3	0.786
63	4.7	5.3	0.870	5.8	6.5	1.05	7.1	8.0	1.26
75	5.6	6.3	1.21	6.8	7.6	1.47	8.4	9.4	1.77
90	6.7	7.5	1.74	8.2	9.2	2.12	10.1	11.3	2.55
110	8.1	9.1	2.62	10.0	11.1	3.16	12.3	13.7	3.78
125	9.2	10.3	3.37	11.4	12.7	4.08	14.0	15.6	4.89
160	11.8	13.1	5.51	14.6	16.2	6.68	17.9	19.8	8.15
180	13.3	14.8	7.00	16.4	18.2	8.62	20.1	22.3	10.3
200	14.7	16.3	8.58	18.2	20.2	10.6	22.4	24.8	12.7
225	16.6	18.4	11.1	20.5	22.7	13.5	25.2	27.9	16.1
250	18.4	20.4	13.7	22.7	25.1	16.6	27.9	30.8	19.8
280	20.6	22.8	17.2	25.4	28.1	20.8	31.3	34.6	24.9
315	23.2	25.7	21.3	28.6	31.6	25.7	35.2	38.9	30.9
355	26.1	28.9	27.0	32.2	35.6	32.7	39.7	43.8	39.3
400	29.4	32.5	34.3	36.3	40.1	41.5	44.7	49.3	49.8
450	33.1	36.6	43.4	40.9	45.1	52.5	50.3	55.5	63.0
500	36.8	40.6	53.6	45.4	50.1	64.8	55.8	61.5	77.7
560	41.2	45.5	67.2	50.8	56.0	81.2			
630	46.3	51.1	84.9	57.2	63.1	102.9			

Specification of HIGH DENSITY POLYETHYLENE (HDPE) PIPE PE 100

Standard : MS 1058 equivalent to ISO 4427 ● Color : Black with 4 blue stripes

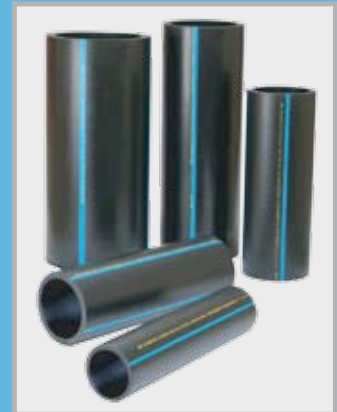
PIPE OD mm	PN 10			PN 12.5			PN16		
	e min mm	e max mm	Wt kg/m	e min mm	e max mm	Wt kg/m	e min mm	e max mm	Wt kg/m
20							2.0	2.3	0.117
25				2.0	2.3	0.149	2.3	2.7	0.171
32	2.0	2.3	0.194	2.4	2.8	0.231	3.0	3.4	0.279
40	2.4	2.8	0.295	3.0	3.5	0.362	3.7	4.2	0.431
50	3.0	3.4	0.453	3.7	4.2	0.550	4.6	5.2	0.669
63	3.8	4.3	0.722	4.7	5.3	0.877	5.8	6.5	1.057
75	4.5	5.1	1.02	5.6	6.3	1.24	6.8	7.6	1.48
90	5.4	6.1	1.47	6.7	7.5	1.78	8.2	9.2	2.14
110	6.6	7.4	2.18	8.1	9.1	2.64	10.0	11.1	3.17
125	7.4	8.3	2.78	9.2	10.3	3.39	11.4	12.7	4.12
160	9.5	10.6	4.56	11.8	13.1	5.55	14.6	16.2	6.73
180	10.7	11.9	5.76	13.3	14.8	7.05	16.4	18.2	8.51
200	11.9	13.2	7.11	14.7	16.3	8.65	18.2	20.2	10.50
225	13.4	14.9	9.02	16.6	18.4	10.98	20.5	22.7	13.28
250	14.8	16.4	11.05	18.4	20.4	13.52	22.7	25.1	16.33
280	16.6	18.4	13.89	20.6	22.8	16.94	25.4	28.1	20.48
315	18.7	20.7	17.58	23.2	25.7	21.47	28.6	31.6	25.92
355	21.1	23.4	22.38	26.1	28.9	27.23	32.2	35.6	32.91
400	23.7	26.2	28.28	29.4	32.5	34.52	36.3	40.1	41.78
450	26.7	29.5	35.83	33.1	36.6	43.73	40.9	45.1	52.90
500	27.7	32.8	44.28	36.8	40.6	53.97	45.4	50.1	65.29
560	33.2	36.7	55.47	41.2	45.5	67.71	50.8	56.0	81.79
630	37.4	41.3	70.26	46.3	51.1	85.58	57.2	63.1	103.63

BBB™ High Density Polyethylene (HDPE) Pipe

As one of the major manufacturer of HDPE pipe in Malaysia, BBB™ HDPE pipes are demanded strict conformity to **MS 1058** standard specifications. Our products are licensed by **SIRIM** and approved by the local water authorities to be the used as the top mark for quality. The granting of the top mark confirms that the company's manufacturing, testing and quality control systems complies with the stringent licensing requirements and thus ensures that the products quality is consistently maintained.

Principal Advantages for using BBB™ HDPE Pipe

- Light-weight for ease of installation and handling
- Immunity to corrosion, chemical and micro-biological resistance
- Flexible
- High impact strength and toughness
- Alternative installation techniques possible



Our products are examined and tested to ensure to compliance with all the relevant standard specifications. The specified tests are all carried out in our laboratory. They are as follow :

- Appearance, dimensions and ovality
- Hydrostatic strength at 80°C for 165 hours
- Hydrostatic strength at 80°C for 1000 hours
- Oxidation Induction Time (OIT)
- Melt Flow Rate (MFR)



Oxidation Induction Time Tester



Melt Flow Rate Indexer