



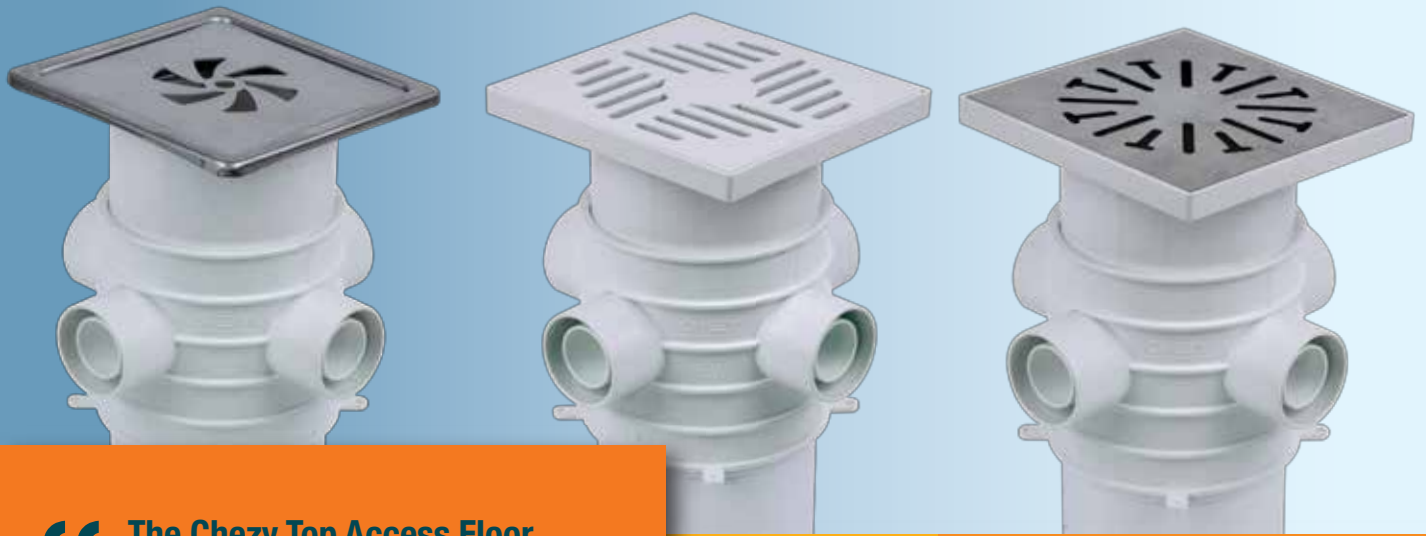
CHEZY SUPERIOR TOP ACCESS FLOOR TRAP SYSTEM

BS EN 1253 : 2015

**Add Flair To Your Bathroom With
Our Classy Gratings & Collars**



Beauty with Functionality



“ The Chezy Top Access Floor Traps were developed to overcome the pitfalls and problems of existing floor trap systems in the market. ”

INTRODUCTION TO CHEZY INDUSTRIES

We are quality manufacturers of the *First Inspection Chambers for housing* in Malaysia presently.

Our director, a mechanical engineer - is known in the industry as the “*Father of Top Access Floor Traps in Malaysia.*” In 1998, he introduced the First Plastic Top Access Floor Trap in Malaysia. He has been involved in the design and manufacturing of 5 different Top Access Floor Trap Systems for sanitary plumbing use since then.

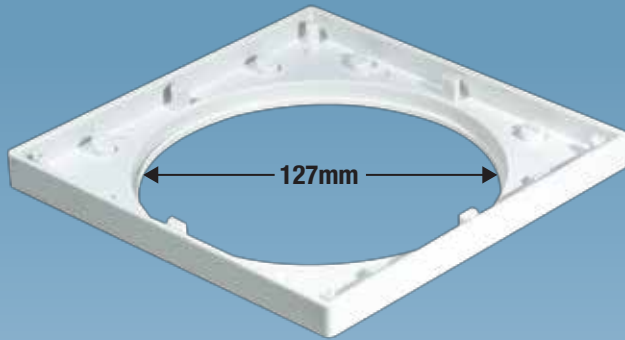
In his words, “*The Chezy Top Access Floor Traps were developed to overcome the pitfalls and problems of existing Floor Trap Systems in the market.* Painstakingly, we have removed these issues one by one from our design. This has resulted in a *much more superior design as well as a functional and great Top Access Floor Trap System for the sanitary plumbing industry.*”

FIRST
INSPECTION
CHAMBER
FOR HOUSING



THE REASONS WHY CHEZY FLOOR TRAPS BEAT ALL COMPETITORS IN THE MARKET - HANDS DOWN.

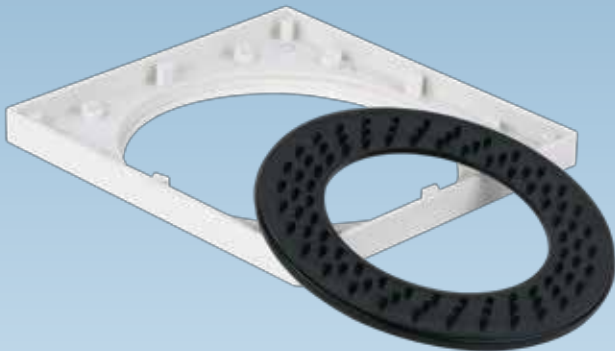
LARGE OPENING IN THE COLLAR - 127mm



During the tiling process in the bathroom, the collar is sometimes offset instead of being exactly in the center (this happens with 20% of top access floor traps)

Result - Bells, inserts, containers in the trap cannot be removed to maintain the trap. The large opening in the Chezy Collar allows easy access, with even 15mm misalignment of the tiles in any direction, access to all parts in the trap can be removed and serviced easily.

HAIR TRAP



One of the main reason for blockages in floor traps is hair. Our floor trap comes with a built-in hair trap. Remove the grating and remove the hair trap. Clean the hair trap and place it back. As simple as that, easy.

PATENTED ONE PIECE BELL & CONTAINER



This ingenious design has tremendous benefits. It acts as a secondary filter and distributes evenly the flow of water through the floor trap. This system increases the efficiency of the floor trap. The container acts to prevent particles of debris larger than 3.5mm from clogging or blocking the outlet of the floor trap. This enables easy maintenance of the floor trap. You would never need to rod the floor trap or clear the outlet of the trap.



FLOOR TRAP WITH THE DEEPEST WATER SEAL - 66mm

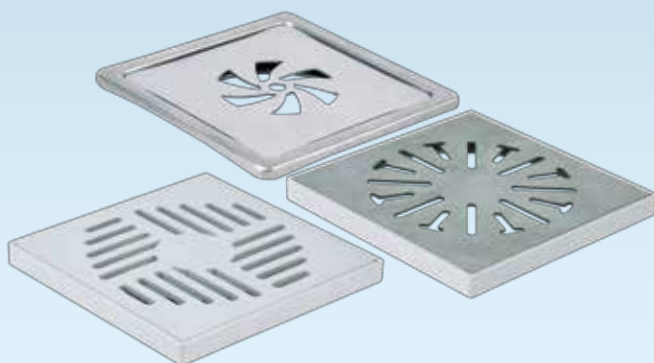
The Chezy Floor Trap has the deepest water seal of all floor traps available in the country. This means that the evaporation of the water seal will last the longest in Malaysia for Top Access Floor Traps as a result of non-usage of the floor trap.

Loss of the water seal can result in foul smell and insects entering the bathroom. The water seal in our floor traps will out last any top access systems in the country.



BACK FLOW THROUGH GRATINGS

As a result of high flow through the inlets of the floor trap body (double kitchen sinks, washing machines and etc), there is a high chance of back flow, soap bubbles coming through the grating if the discharge flow stream hits a body (inserts, bell, & etc) in its path in the floor trap. With the Chezy Floor Trap, there is no blockage or barrier to the flow stream letting the discharge flow through easily.



WHY CHEZY TOP ACCESS FLOOR TRAPS?

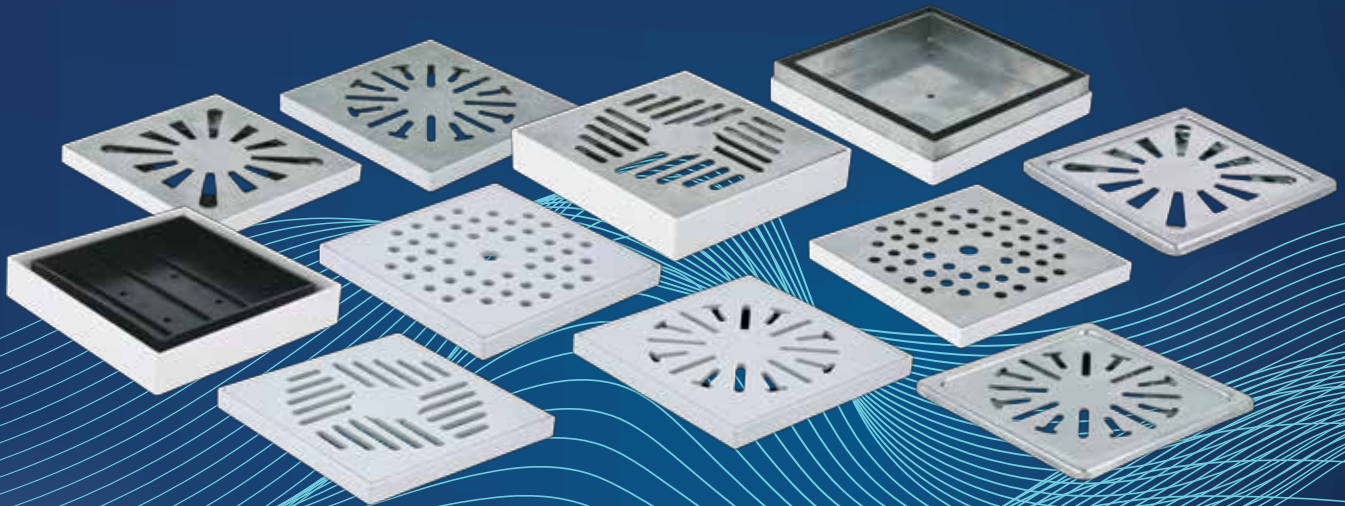
Apart from the flair, aesthetics and architecturally pleasing gratings of the Chezy Top Access Floor Traps - The developers, architects, consultants and house owners receive the best functional and great additional benefits at no additional costs. All for free!!!

CHEZY SUPERIOR TOP ACCESS FLOOR TRAP SYSTEM

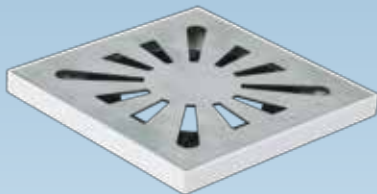
BS EN 1253 : 2015



Add Flair To Your Bathroom



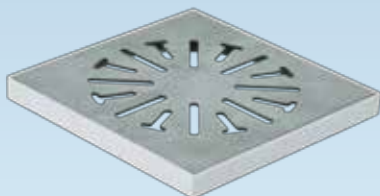
HIGH QUALITY STAINLESS STEEL FLOOR TRAP SYSTEMS



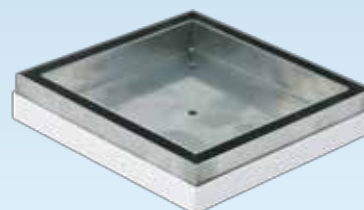
Product code: SG4-PC
Exceptional quality stainless steel and polished finish grating.
Color: Silver
Size: 6" x 6" (150mm x 150mm)
Load: 300 KG



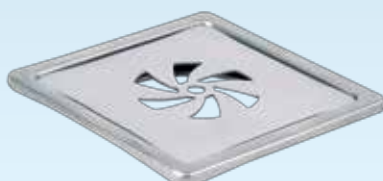
Product code: SG1-PCD
High quality stainless steel and aesthetically pleasing grating.
Color: Silver
Size: 6" x 6" (150mm x 150mm)
Load: 300 KG



Product code: SG2-(L)-PC
High quality stainless steel and well-designed grating.
Color: Silver
Size: 6" x 6" (150mm x 150mm)
Load: 300 KG



Product code: ST-PCT
Standout stainless steel quality tile tray.
Color: Silver
Size: 6" x 6" (150mm x 150mm)
Load: 300 KG



Product code: SG5-SC
Elegant Design.
Color: Silver
Size: 6" x 6" (150mm x 150mm)
Load: 300 KG

Product code: ST-(L)-PCT
Sleek looking high quality stainless steel tile tray.
Color: Silver
Size: 6" x 6" (150mm x 150mm)
Load: 300 KG

HIGH QUALITY ABS PLASTIC FLOOR TRAP GRATINGS



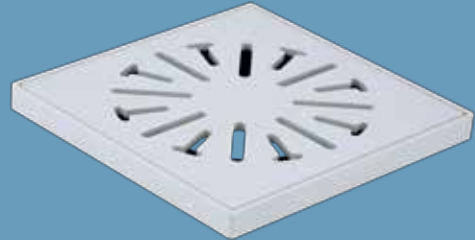
Product code: PG1-PC

Modern Design.

Color: White

Size: 6" x 6" (150mm x 150mm)

Load: 300 KG



Product code: PG2-PCD

High quality ABS plastic with superior finish grating.

Color: White

Size: 6" x 6" (150mm x 150mm)

Load: 300 KG

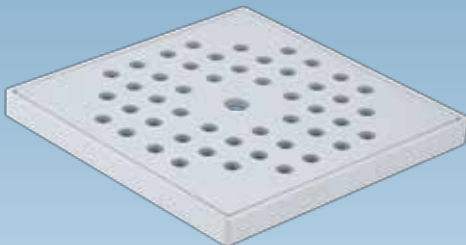
Product code: PGW2-PC

High quality ABS plastic with washing machine plug.

Color: White

Size: 6" x 6" (150mm x 150mm)

Load: 300 KG



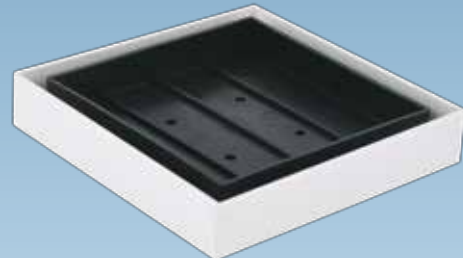
Product code: PGW3-PCD

High quality ABS plastic with excellent finish.

Color: White

Size: 6" x 6" (150mm x 150mm)

Load: 300 KG



Product code: PT-PCT

High quality ABS plastic used with square tile.

Color: Black

Size: 6" x 6" (150mm x 150mm)

Load: 300 KG